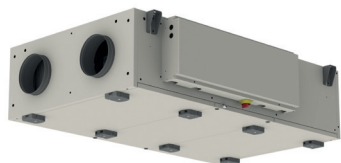


WTW-luchtbehandelingsgroep

11058157



Toepassingsgebieden

Nieuwbouw, Renovatie, Utiliteitsruimten, Etablissements scolaires

Accessoires

| Benamingen | Referenties |
|---------------------------------|-------------|
| | 11058253 |
| | 11058300 |
| | 11058307 |
| | 11058347 |
| | 11058391 |
| | 11058433 |
| | 11058478 |
| | 11058483 |
| | 11058497 |
| Kit sifon InspirAIR® Top | 11023483 |
| CO2-sensor | 11017090 |
| Rechthoekige soepele mof CX3030 | 11059309 |
| | 11059296 |
| | 11058377 |

Bijbehorende diensten

Inbedrijfstelling, Option rafraîchissement

Algemene gegevens

| Referenties | Dichtheid van isolatiemateriaal (kg/m) | Dikte isolatiemateriaal (mm) | | (%) | | | | Pa) | Aansluitrichting | Type warmtewisselaar |
|-------------|--|------------------------------|-----------------|------|------------|-------|---------------------------|-----|------------------|----------------------|
| 11058157 | 70 | 50 | -20°C+35°C | 65,5 | 62N (2015) | 83,6N | Med motorcontroller (VSD) | 555 | Ceiling | Tegenstroom |

Dimensionale gegevens

| Referenties | A (mm) | B (mm) | C (mm) | Tilsluiting horizontaal mál (mm) | Tilsluiting vertikaal mál (mm) | Gewicht (kg) |
|-------------|--------|--------|--------|----------------------------------|--------------------------------|--------------|
| 11058157 | 1800 | 1500 | 480 | 550 | 300 | 230 |

Aerulische gegevens

| Referenties | Débit minimum | Max. debiet ErP (m³/h) | Max. debiet (m/u) |
|-------------|---------------|------------------------|-------------------|
| 11058157 | 152 | 1600 | 1680 |

Thermische gegevens

| Referenties | Max. rendement van de warmtewisselaar (%) | Max. opgenomen vermogen (kW) |
|-------------|---|------------------------------|
| 11058157 | 94 | 5 |

WTW-luchtbehandelingsgroep

11058157

Elektrische gegevens

| Referenties | Spanning (V) | Frequentie (Hz) | Max. vermogen van de elektrische batterij (kW) | Puissance max de la batterie électrique 2 | Max current phase – unit (A) | Max. elektrisch vermogen van de groep (kW) | Puissance consommée (kW) |
|-------------|--------------|-----------------|--|---|------------------------------|--|--------------------------|
| 11058157 | 1x230 | 50 | 4 | 8 | 5,0 | 1,12 | 0,52 |

Door de wet voorgeschreven gegevens

| Referenties | Gehäusesteifigkeit | Dichtheid bei Unterdruck von –400 Pa | Dichtheid bei Überdruck von +700 Pa | Filter–Bypass–Leckage | Wärmedurchlässigkeit | Wärmebrückenfaktor |
|-------------|--------------------|--------------------------------------|-------------------------------------|-----------------------|----------------------|--------------------|
| 11058157 | D1 | L2 | L2 | F9 | T3 | TB3 |